

Welding Consumables

Stainless Steel
Metal-Cored
Mild Steel
Nickel Alloy

Stainless Steel Metal-Cored Arc Welding Wire



American Wire Research, Inc.

Stainless Steel Metal-Cored Arc Welding Wire for Engine Exhaust Systems

Why 400 series stainless steel for exhaust system

- Thermal expansion coefficient is close to the material of engine
- Ti/Nb added, high temperature corrosion resistance is excellent
- Cost effectiveness

Why Metal-type Flux-Cored

- Higher burn-through resistance
- Good root-gap-bridging ability
- Superior crack resistance
- Faster travel speed
- Improved arc stability
- Higher flexibility of alloying composition
- Good wetting behavior
- Excellent mechanical property
- No slag, low spatter and less clean up
- Much wider welding parameters

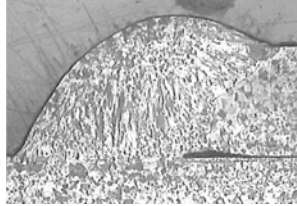
Welding Parameters

- Voltage: 13 V
- Current: 130 A
- Travel Speed: 50 CPM (19IPM)
- Stick out length: 6mm (1/4")
- Shielding Gas: 98% Ar + 2% O₂

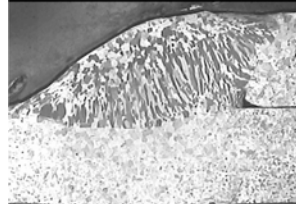
Stainless Steel Metal-Cored			
Product Name	AWS Classification	Diameter	Packaging & Weight
AMC-409Ti	EC409	0.035", 0.045"	Spool: 33lbs
AMC-439Ti	EC439	0.035", 0.045"	Spool: 33lbs
AMC-430LNb		0.035", 0.045"	Spool: 33lbs

AWR stainless steel metal cored products produce a good weld bead profile with fine microstructure. As compared to our competitors:

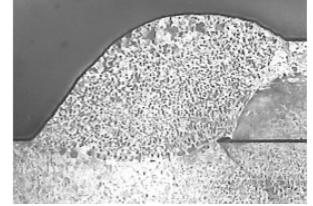
Scale: 2.0 mm



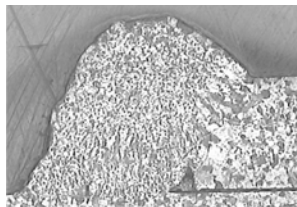
AMC-409Ti



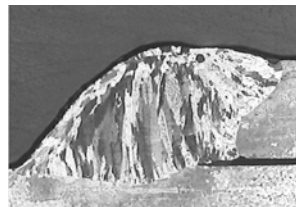
AMC-439Ti



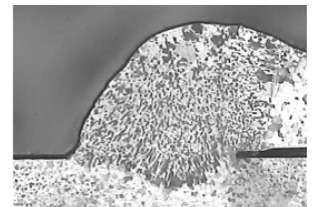
AMC-430LNb



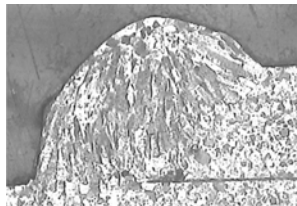
L brand 409



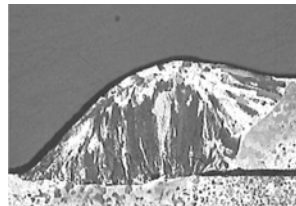
L brand 439



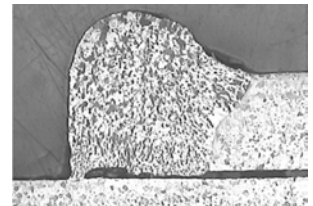
K brand 430M



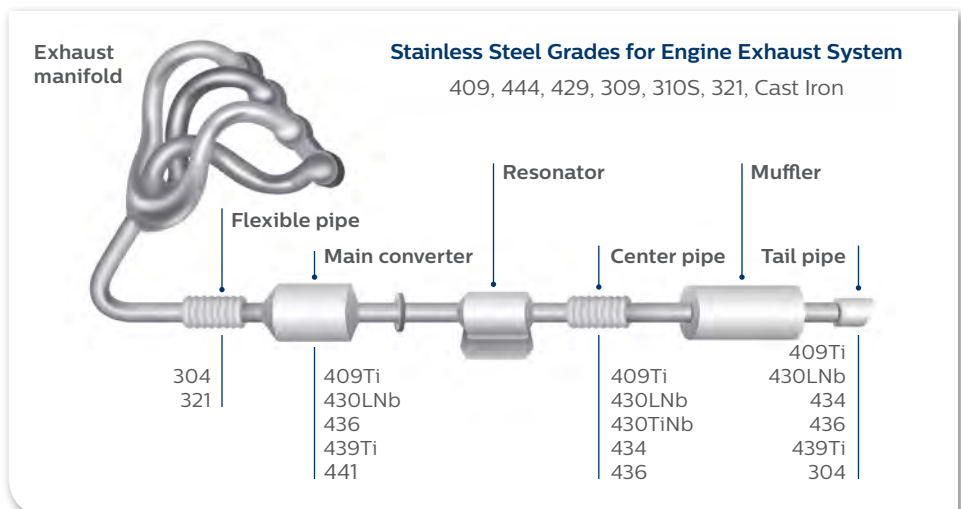
E brand 409



E brand 439



W brand 430



American Wire Research, Inc.

1005 Airbrake Avenue, Wilmerding, PA 15148
P: (412) 349-8431 • F: (412) 774-5005
Toll-Free: 1-800-250-5926
www.americanwireresearch.com